

PINT SIZE TABLE RUNNER

— July —

KITS available from
ShabbyFabrics.com
while supplies last

PLEASE NOTE

All seams are ¼"

WOF = Width of Fabric RST = Right Sides Together

REQUIRED MATERIALS

- 7" × 14" denim blue texture for **HST (Fabric A)**
- 12" × 21" cream word toss for **HST and flying geese (Fabric B)**
- 12" × 14" dark blue patriotic stars for **flying geese (Fabric C)**
- 8" × 8" red fireworks for **block centers (Fabric D)**
- 10" × 10" cream mottled for **stitch-and-flip corners (Fabric E)**
- 14" × 14" pale blue mottled for **appliqué background (Fabric F)**
- 2" × 2" blue with stars for **cornerstone (Fabric G)**
- 4" × 14" red cream stripe for **HST (Fabric H)**
- 7" × WOF dark blue mottled for **binding (Fabric I)**
- 27" × 21" for **backing**
- various scraps for appliqué
- fusible webbing

CUT FABRICS

From denim blue texture (**Fabric A**), cut:

- (8) 2½" × 2½" squares for **HST**
- OR, if using Star Singles 1½" Half Square Triangle Papers**, (2) 5½" × 5½" squares

From cream word toss (**Fabric B**), cut:

- (4) 4¾" × 4¾" squares for **flying geese**
- (8) 2½" × 2½" squares for **HST**
- OR, if using Star Singles 1½" Half Square Triangle Papers**, (2) 5½" × 5½" squares

From dark blue patriotic stars (**Fabric C**), cut:

- (16) 2¾" × 2¾" squares for **flying geese**

From red fireworks (**Fabric D**), cut:

- (4) 3½" × 3½" squares for **block centers**

From cream mottled (**Fabric E**), cut:

- (16) 2" × 2" squares for **stitch-and-flip corners**

From pale blue mottled (**Fabric F**), cut:

- (2) 5½" × 13" rectangles for **appliqué backgrounds**

From blue with stars (**Fabric G**), cut:

- (1) 1" × 1" square for **cornerstone**

From red cream stripe (**Fabric H**), cut:

- (4) 1" × 6½" rectangles for **sashing**

From dark blue mottled (**Fabric I**), cut:

- (2) 2½" × WOF for **binding**



Finishes to: 13" × 23"

RECOMMENDED PRODUCTS

- Star Singles 1½" Half Square Triangle Papers
- Creative Grids 6½" × 24½" Ruler #CGR24
- Creative Grids 6½" Square Ruler #CGR6
- Wafer 1 Lightbox
- Appli-Fuse Silicone Mat - 12" × 18"
- Wool Pressing Mat
- Pint Size Table Runner Series Kit - July - 4 pc. Thread Set

All available at ShabbyFabrics.com

As seen on the
**PINT SIZE TABLE RUNNER
SERIES - JULY**
video featured on our YouTube channel:



[YouTube.com/Shabby Fabrics](https://www.youtube.com/ShabbyFabrics)

HALF SQUARE TRIANGLES

If using Star Singles 1½" Half Square Triangle Papers, use (2) papers, (2) 5½" × 5½" A squares, and (2) 5½" × 5½" B squares to make (16) A/B HST. Press toward B, and skip ahead to ★Flying Geese.

STEP 1: On the back of (1) 2½" × 2½" A square, draw a line diagonally from corner to corner.

STEP 2: Layer this square and (1) 2½" × 2½" B square, RST, making sure to line up the edges.

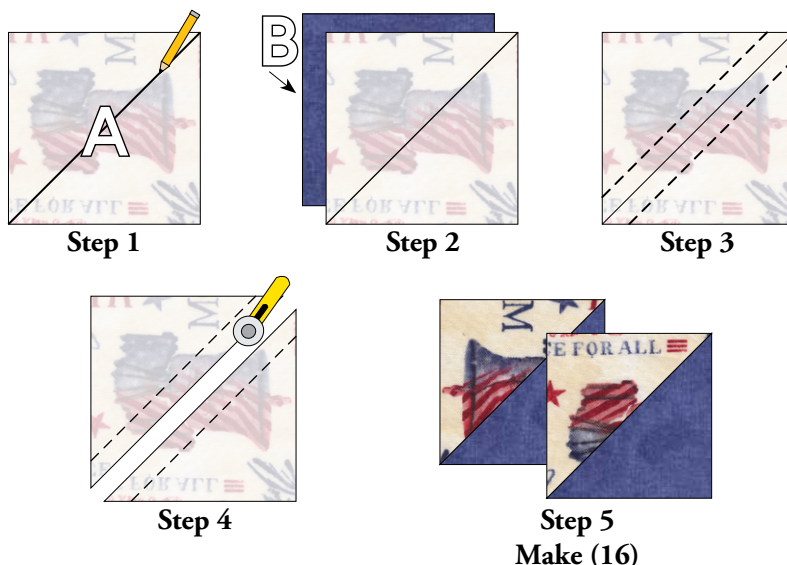
STEP 3: Sew ¼" on both sides of the drawn line.

STEP 4: Cut on the drawn line. Press toward B.

STEP 5: You will now have two A/B units.

STEP 6: Repeat Steps 1-5 to make a total of (16) A/B units.

IMPORTANT: Trim each HST to 2" × 2".



★FLYING GEESE

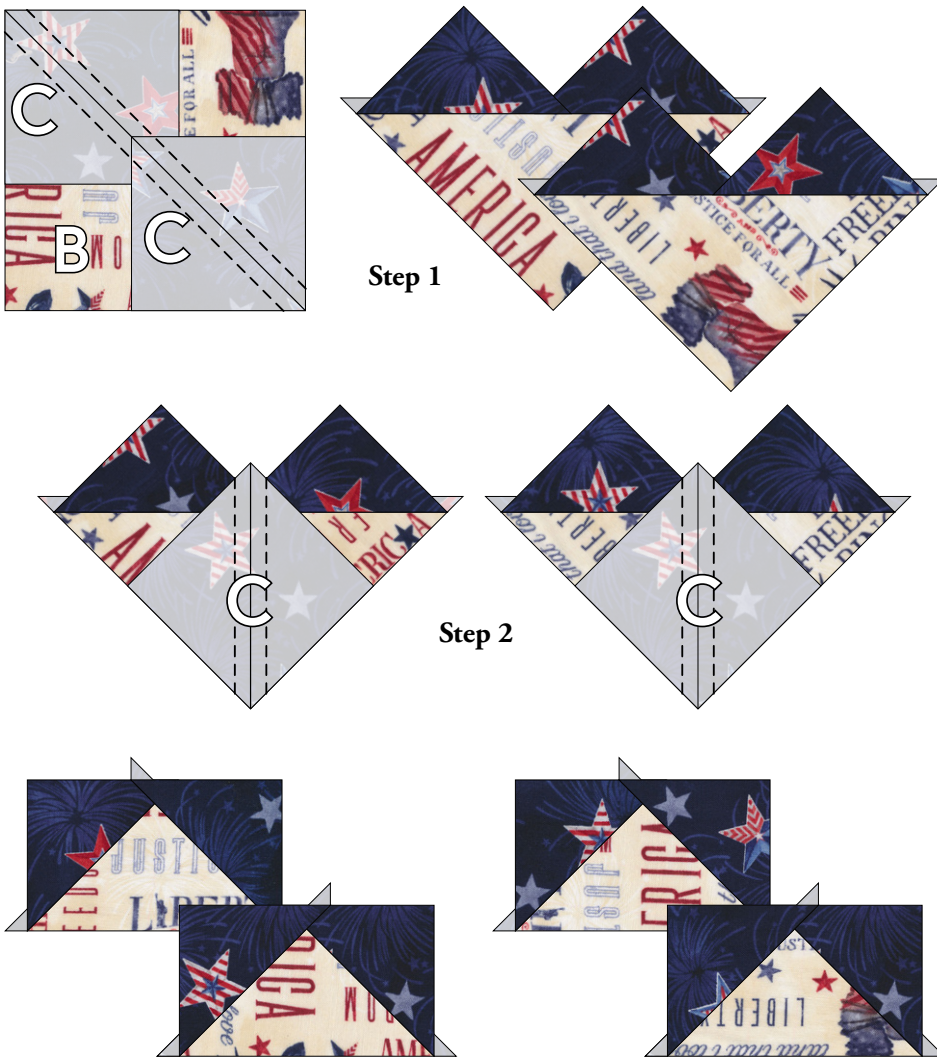
We used the Creative Grids Ultimate Flying Geese Tool to create our Flying Geese units. This tool provides for oversizing the unit, then using the tool to trim accurately. If using this tool, you will be using the marks for a Finished Size of 1½" × 3" (lines labeled C).

STEP 1: Draw a diagonal line on the back of all C squares. Place (2) C squares in opposite corners of (1) 4¾" × 4¾" B square, RST. Sew ¼" along each side of the drawn line. Cut on drawn line. Press toward C. You will now have (2) units.

STEP 2: Place another C square on the corner of each unit, RST. Pin well in all four corners. Sew ¼" along each side of the drawn line. Cut on the drawn line. Press toward C. You will have four Flying Geese units.

IMPORTANT: Use Creative Grids Ultimate Flying Geese Tool (or your preferred ruler) to trim Flying Geese unit to 2" × 3½".

Repeat these steps to make a total of (16) Flying Geese units.



Flying Geese
(Make 16)

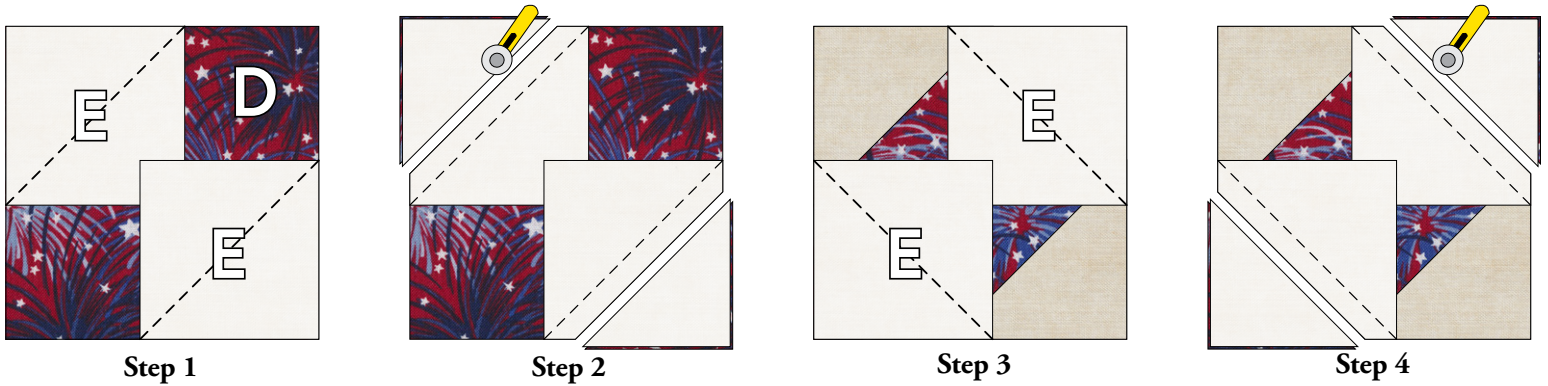
SQUARE IN A SQUARE UNITS

STEP 1: On the back of (4) E squares, draw a line diagonally from corner to corner. Place (2) E squares in opposite corners of (1) D square, RST, noting direction of diagonal. Sew on drawn lines.

STEP 2: Trim seam allowance to $\frac{1}{4}$ ". Press toward E.

STEP 3: Place (2) E squares in remaining corners of D square, RST, noting direction of diagonal. Sew on drawn lines.

STEP 4: Trim seam allowance to $\frac{1}{4}$ ". Press toward E.



Repeat steps 1-4 to make a total of (4) Square in a Square units.
Each unit should measure $3\frac{1}{2}$ " \times $3\frac{1}{2}$ ".



Square in a Square
(Make (4))

PIECED BLOCKS

Arrange units as shown. Sew together into rows. Press seams open.

Sew rows together. Press seams open.

Block should measure $6\frac{1}{2}$ " \times $6\frac{1}{2}$ ".

Make a total of (4) blocks.



Pieced Block - Make (4)

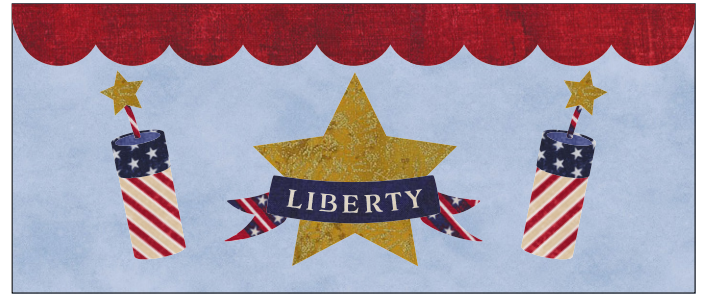
APPLIQUÉ

NOTE: For the sample project, the “LIBERTY” letters were *cut away* from the banner with a laser cutting machine, allowing the fabric from the shape behind to provide the color for the letters. If you have not purchased our laser-cut kit, you may opt to embroider the “LIBERTY” letters. *If you embroider your letters, you may omit the banner fill (shape 4).* Whatever method you choose, the letters should be created at this point.

All appliqué shapes are symmetrical, so there is no need for a reverse diagram when tracing shapes for fusible appliqué.

Gently peel fusible paper from the back of each shape. Refer to Assembly Diagram to arrange shapes on background fabric.

Appliqué in place using the method and stitch of your choice.



Appliqué - Make (2)

ASSEMBLE TABLE RUNNER

Arrange blocks as shown. Sew **sashing** strip between two blocks; press toward sashing. Sew sashing strips to each side of **cornerstone**; press toward sashing. Sew pieced blocks and sashing unit together; press toward sashing unit. Sew one appliqué unit to each end as shown; press toward pieced blocks.



FINISH TABLE RUNNER

Layer top, batting, and backing. Quilt as desired.

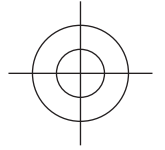
Piece **binding** into one long strip. Fold in half lengthwise, wrong sides together, and press. Line up raw edges of the binding with the raw edge of the table runner. Sew binding to the front side of the table runner, starting at any side. Turn the binding over and hand stitch to the back of the table runner.

Shop 24/7 for BOMs and Clubs, kits, and *more* at [ShabbyFabrics.com!](http://ShabbyFabrics.com)

PINT SIZE TABLE RUNNER

— July —

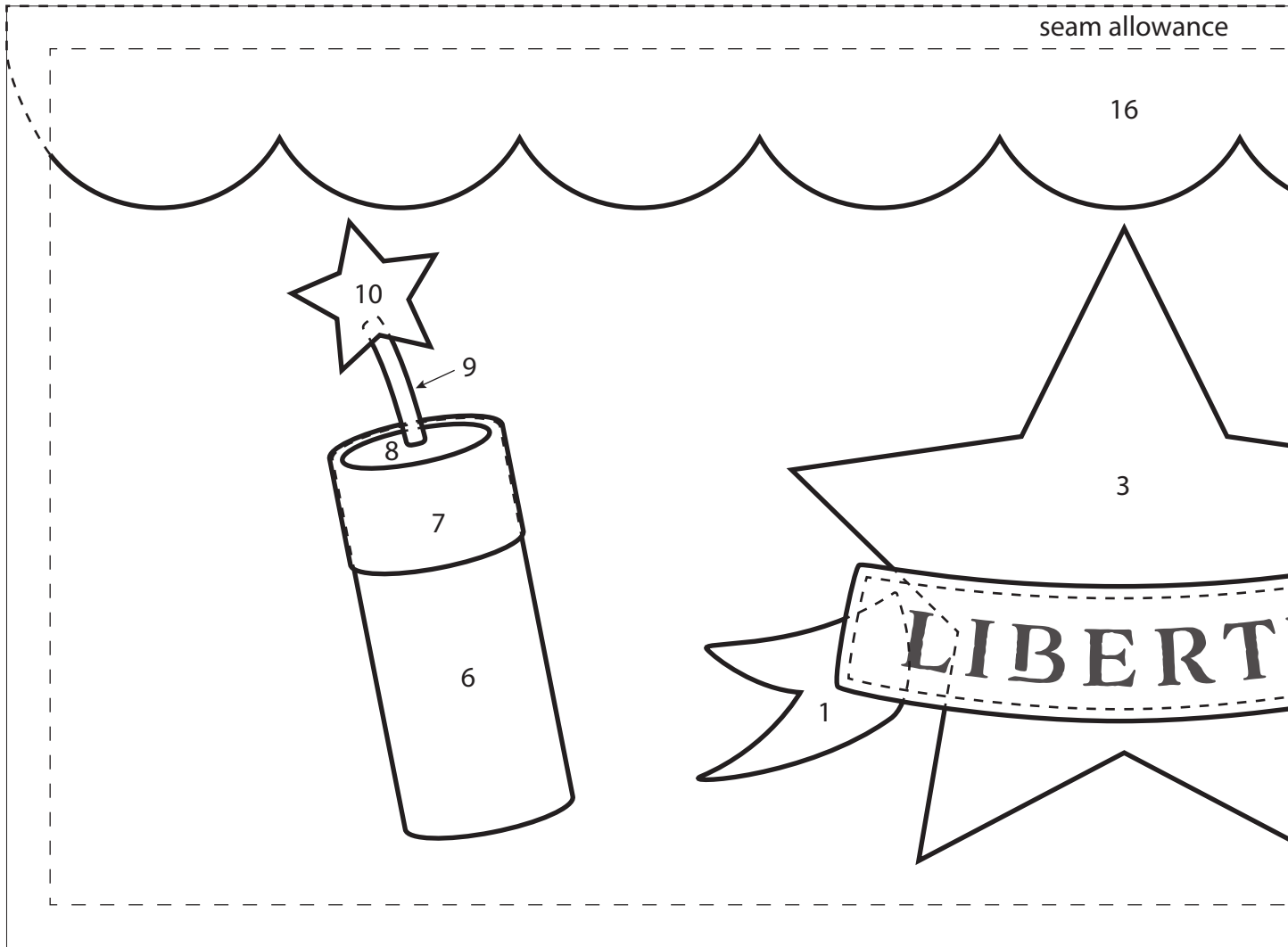
© 2022 Shabby Fabrics



Assembly Diagram

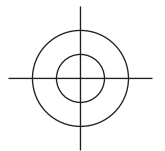
All shapes are symmetrical;
diagram can be used for tracing and for placement

Align bullseye marks on page 1 with
bullseye marks on page 2, then tape
pages together



ShabbyFabrics.com

For personal use ONLY, not for commercial production. No part of this pattern may be reproduced, shared, or distributed in any form unless given express written consent by Shabby Fabrics. Not to be used with any online classes or video tutorials other than the official Shabby Fabrics tutorial. All designs, photographs, and images are protected by federal copyright law. All rights reserved.

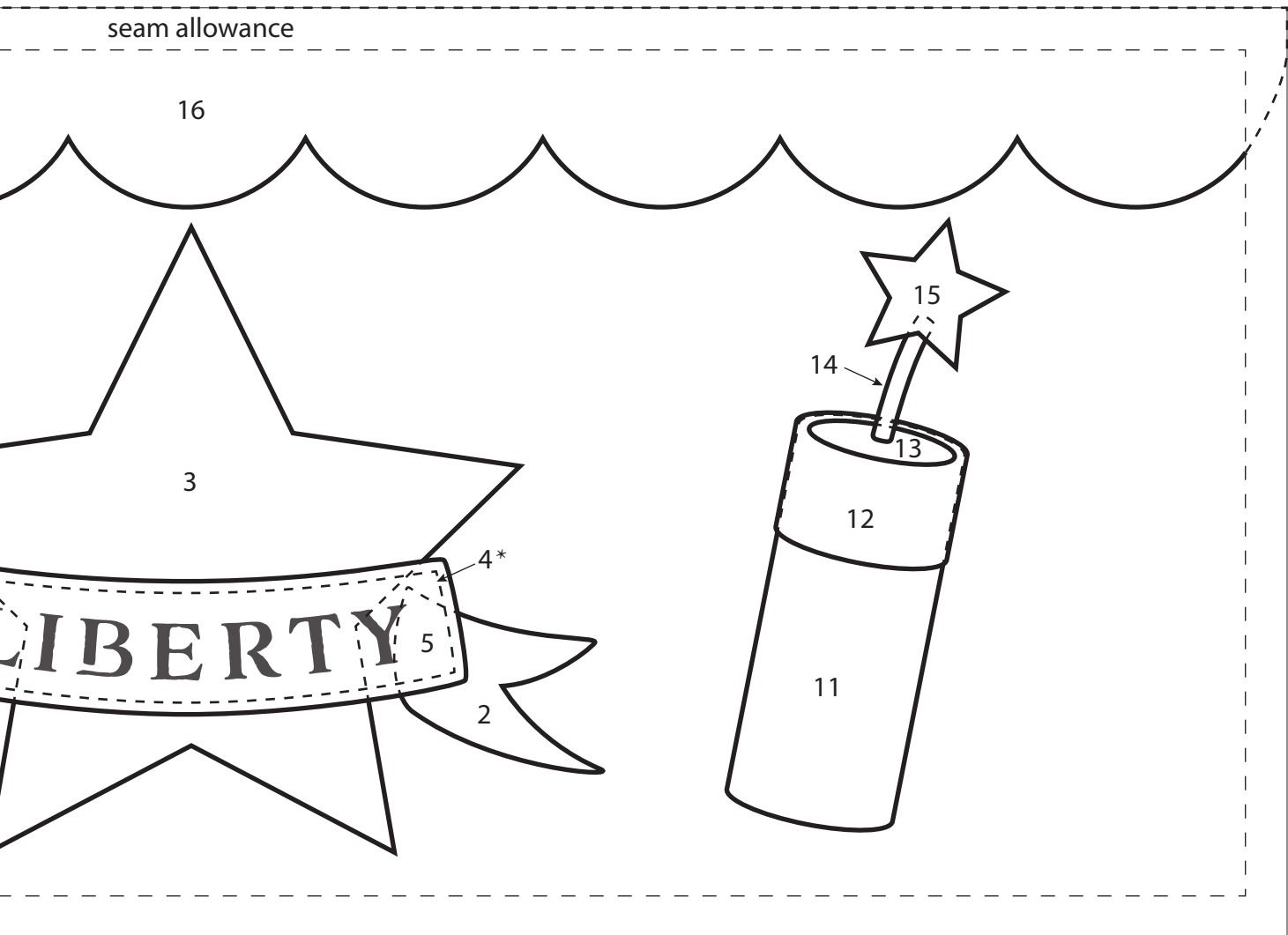


PINT SIZE TABLE RUNNER

— July —

© 2022 Shabby Fabrics

**If you embroider your letters, you may omit the banner fill (shape 4).*



ShabbyFabrics.com

For personal use ONLY, not for commercial production. No part of this pattern may be reproduced, shared, or distributed in any form unless given express written consent by Shabby Fabrics. Not to be used with any online classes or video tutorials other than the official Shabby Fabrics tutorial. All designs, photographs, and images are protected by federal copyright law. All rights reserved.